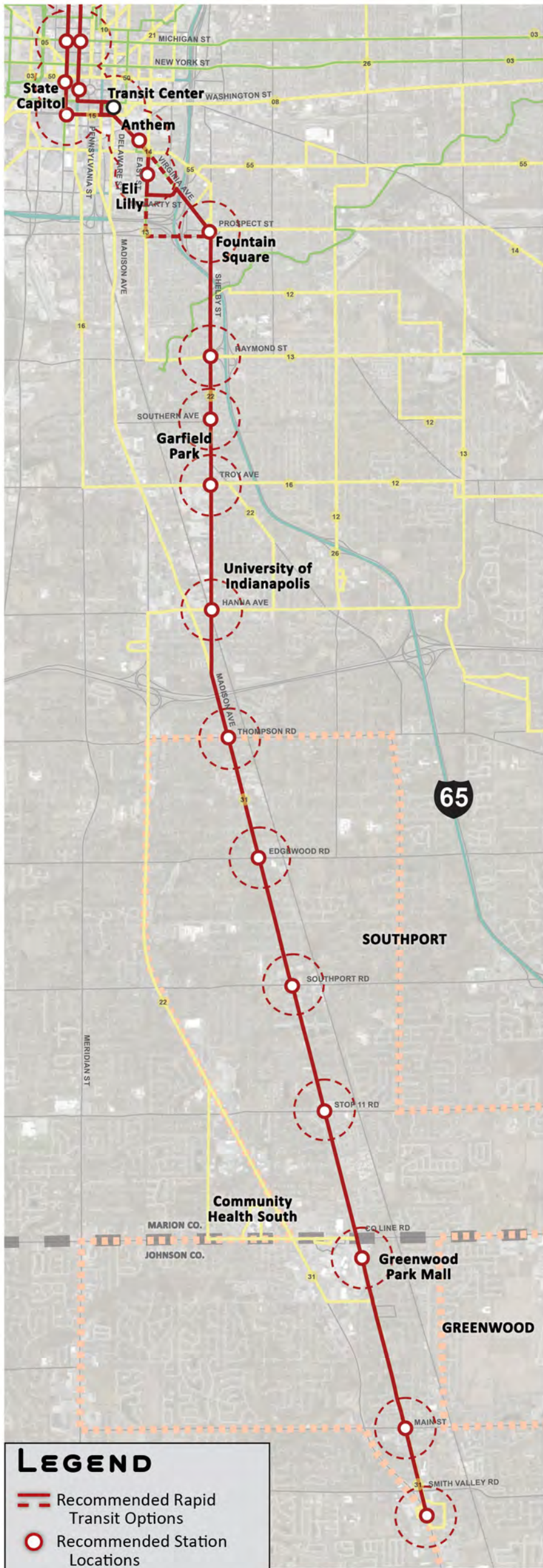




Recommended Alternative



LEGEND

- Recommended Rapid Transit Options
- Recommended Station Locations
- Dedicated Lane Options
 - Transitway
 - Travel Lane
 - Parking Lane (Peak Hours)
- Existing Local Bus
- Planned Local Bus
- Planned Express
- Planned Circulator
- Bikeways & Greenways

0 1 Mile

Red Line Operating Plan		
Service Period	Service Frequency	Service Span
Weekdays	10 min (peak - 3 hours AM & 3 hours PM) 15 min (off-peak)	20 hours 4:30am - 12:30am
Saturdays	20 min (daytime) 30 min (night)	18.5 hours 6:00am - 12:30am
Sundays	20 min (daytime) 30 min (night)	14.5 hours 6:30am - 9:00pm

